

**INSTRUCTIONS  
FOR ASSEMBLY  
AND USE**  
SUPER SAM AND  
SAM CLUB  
**R20190304**



**Super SAM**



**Sam Club**

## CONTENT

Safety	6
Packaging, weight and sizes	9
Installation	11
Instructions for use	18
Maintenance	22
Technical specifications	23
Spare parts	28

## Safety

### 1. General information

Although this manual has been compiled with great care errors and omissions cannot be ruled out. Schelde Sports therefore accepts no liability, for direct or indirect damage, caused by or in connection with the use and application of these instructions for assembly. Safety regulations as well as the general rules in this manual must be complied with every situation.

### 2. How to use this manual

This manual contains instructions for assembly. Read this manual and all the instructions pertaining to the assembly of this product carefully and make sure the manual is always within reach.

To reduce the risk of (serious) injury read all the warnings, precautions and instructions in this manual and apply them.

**The supervisor should point out to users that the manual should be read before using this product.**

### 3. Warning.

- The backboard, ring and net as well as the padding may only be assembled by qualified personnel.
- Always take into account the applicable local and general building and safety regulations.
- All the parts may only be used for basketball; the warranty shall become void in case of other use.
- Always work with a team of minimum two persons.
- Always assemble the backboard together with the ring.
- **Do not remove the transport bracket before assembling the backboard. Removing the transport bracket without the backboard in place can cause serious accidents. The springs are under great tension.**
- Keep the transport bracket and attachment hardware at hand.
- The backboard is made of tempered glass, exercise great caution!

### 4. Introduction.

Movable foldable basketball backstop, type Super SAM 325, Super SAM Multiadjust, Super SAM 245, with patented DSF system. SAM 225 Club, SAM 165 Club with patented APF system. Tempered glass SHORT backboard, 105x180 cm (10 year warranty), 12 mm thick, encased in a full-perimeter steel frame. Includes super padding. With drunk ring + super net. This basketball backstop comes with a special spring assisted mechanism so the ring can be easily raised and locked at various heights.

The unit has the required counterweights and floor connectors at the front and back of the basic frame. Height in storage position maximum 210 cm. Approved and recommended by FIBA. The unit is delivered unassembled; a padding set, backboard, ring and net, and braces, backboard padding, feet of the floor pedestals and the assembled unit with a kit of assembly tools.

The cover plate and cover for the springs and the ballast have already been pre-assembled at the factory.



Range Checklist	Super SAM 325	Super SAM 245	Super SAM MA	225 Club	165 Club
Tempered glass backboard	S	S	S	S	S
Multidirectional dunk ring 180°	S	S	S	-	-
Unidirectional dunk ring	-	-	-	S	S
4 swivel wheels (front, 2 x 2)	-	S	-	S	S
6 swivel wheels (front, 2 x 3)	S	O	S	O	O
4 fixed wheels (rear, 2 x 2)	-	-	-	S	S
6 fixed wheels (rear, 2 x 3)	S	S	S	O	O
Maintenance-free pivot bearings	S	S	S	S	S
Folded height max. 210 cm	S	S	S	S	S
Forklift tubes in base frame	S	S	S	S	S
305 cm and 260 cm ring height settings	S	S	S	S	S
Automatic lock on telescopic rod	S	S	S	S	S
Lockable deadlock tensioner	S	S	S	-	-
Lockable beam-catch in stored position	S	S	S	S	S
Front-, sides and neck padding set	S	S	S	-	-
Front and sides padding set	-	-	-	S	S
Automatic DSF (Dynamic Sub Frame)	S	S	S	-	-
Automatic pedestal feet APF	-	-	-	S	S
Manual operation of DSF/APF	O	O	O	O	O
Front locator pins and floor plates	S	S	S	S	S
Integrated rear anchor system and floor plate	S	S	S	S	S
No-tool ring height adjustment in base frame	S	S	S	-	-
Customized padding	O	O	O	O	O
Extra spring for shot clock compensation	S	O	S	-	-
Shot clock brackets	O	O	O	O	O
100% enclosed ballast weight	S	S	S	S	S
Additional ballast weight in base	O	O	O	O	O
FIBA approved	LEVEL 1 + 2	LEVEL 2	LEVEL 1 + 2	LEVEL 2	-
LED strip on backboard	O	O	O	O	O

- S = standard
- O = option
- = not available

The supervisor should point out to users that the manual should be read before using this product.

**CERTIFICATION**

The unit has been FIBA certified for top level (level 1 and level 2) competitions and complies with the European standard EN1270:2005 Playing field equipment. Basketball equipment. Functional and safety requirements, test methods.



**CERTIFICATE OF APPROVAL**

VALID UNTIL 31 DECEMBER 2020

FIBA (Fédération Internationale de Basketball) hereby declares, by means of this certificate, that the basketball equipment, indicated below, fulfils the standards specified in the latest edition of the FIBA Approval Programme for Basketball Equipment and therefore qualifies as

**FIBA APPROVED EQUIPMENT**

EQUIPMENT CATEGORY: BACKSTOP UNITS

CONTRACT NO: M24-2020

COMPANY: SCHELDE SPORTS

Approval Type	Model Name	FIBA Licence No.	Competition Level
Portable	Super SAM 325 (Laminated/ Tempered Glass)	BU24-01	1 & 2
Portable	Super SAM Multi-Adjust (Laminated/ Tempered Glass)	BU24-02	1 & 2
Portable	Super SAM 245 (Laminated/ Tempered Glass)	BU24-03	2
Portable	Sam 225 Club (Laminated/ Tempered Glass)	BU24-04	2
Ceiling-mounted	Dual Tube System (Laminated/ Tempered Glass)	BU24-05	2
Wall-mounted	Up-Folding System / Side-Folding System (Laminated/ Tempered Glass)	BU24-06	2

Level 1: FIBA National Team and Club Competitions plus other elite level national and international club and national team competitions,

National club competitions may be subject to additional rules issued by national governing bodies. 'FIBA National Team and Club Competitions' are defined in Book 2 of the FIBA Internal Regulations governing the FIBA Competitions. All equipment at these competitions must be FIBA Approved Level 1 and may display the official FIBA Approved Equipment logo in a FIBA approved layout or make reference to FIBA approval in a FIBA approved form.

Level 2: Any other competition not included in Level 1,

For Level 2, all technical specifications of basketball equipment must be respected, and FIBA Approved Equipment is strongly recommended.



**Andreas Zagklis**  
FIBA Secretary General



January 2020

FIBA.basketball



## Packaging, weight and sizes

### PACKAGE 1

#### Portable basketball goal

Weight:	1,261 kg	
Dimensions:	455x112x137 cm	SAM 325
	379x112x137 cm	SAM 245
	351x112x137 cm	SAM 225
	302x112x137 cm	SAM 165
	379x112x137 cm	SAM MA

### PACKAGE 2

#### Tempered glass backboard

Weight:	100 kg
Dimensions:	186x106x7 cm

### PACKAGE 2A

#### Backboard padding

Weight:	5 kg
Dimensions:	98x45x11 cm

### PACKAGE 3

#### Dunk ring + net

Weight:	13 kg
Dimensions:	65x50x20 cm

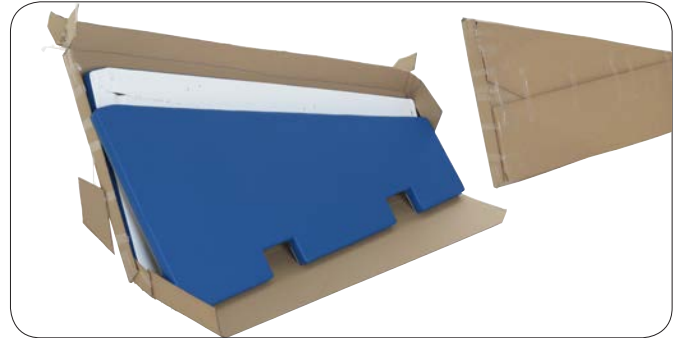


### PACKAGE 4

Set of side paddings left/right

Weight: 34.6 kg

Dimensions: 196x95x20 cm



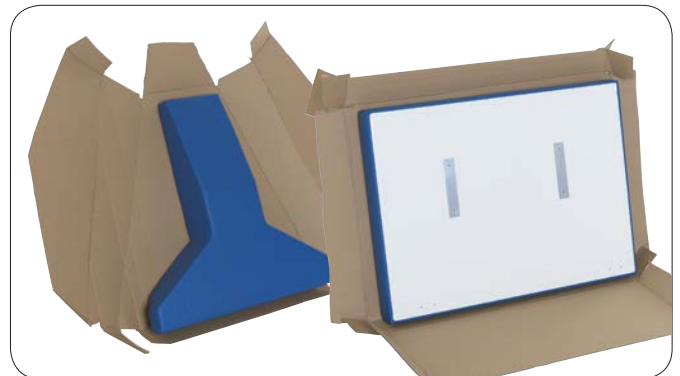
### PACKAGE 5a

Neck padding

Weight: 15.6 kg

Dimensions: 130x130x30 cm

or



### PACKAGE 5b

Base padding

Weight: 35.6 kg

Dimensions: 130x95x28 cm

### PACKAGE 6

Braces + tongues, hinges and fasteners for padding + chain for connecting the unit to the floor with safety hooks and accessory for the assembly of the glass backboard

Weight: 15.2 kg 13.6 kg

Dimensions: 157x13x10 cm 35x25x26 cm



### PACKAGE 7

Optional manual DSF feature (APF)

Weight: 5 kg

Dimensions: 150x20x15 cm



### PACKAGE 8

Neck padding

Weight: 4.8 kg

Dimensions: 103x22x30 cm





## Installation

Assembly of the portable basketball backstop:

Warning.

- Backboard, ring, net and padding may only be installed by qualified technical staff
- Always comply with local building codes and safety regulations
- Always work in a team of minimum two technicians
- Always mount the backboard simultaneously with the ring
- Use the temporary support tool for mounting the backboard

Assemble the backboard / basketball ring:

### STEP 1

Mount temporary support ① onto the backboard frame

### STEP 2

Hook up the backboard to the nose of the beam (minimum 2 persons needed!!). Use the two M10x25 bolts ② with washers for bolting the backboard onto the nose of the beam.

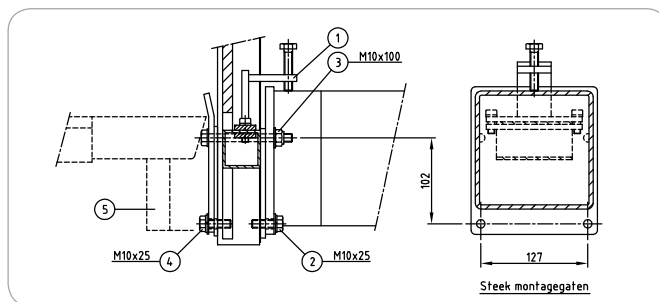
### STEP 3

Insert the two M10x100 bolts ③ through the backboard and the nose mounting plate of the beam and tighten the selflocking nuts

### STEP 4

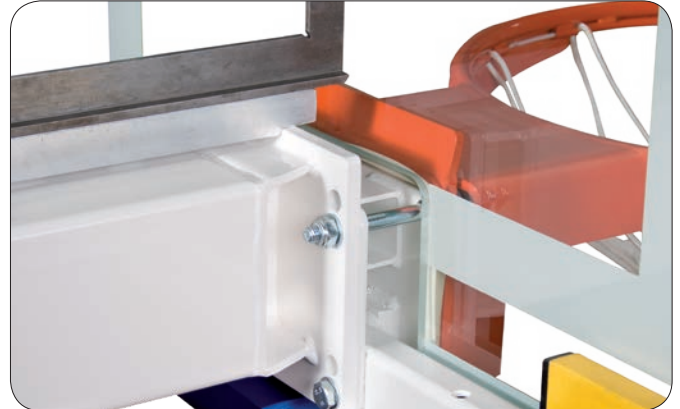
Remove the cover ⑤ from the basketball ring; mount the ring onto the heads of the M10x100 bolts and also mount the two M10x25 bolts in the lower ring holes.

- **DO NOT EVER REMOVE THE TRANSPORT BRACE WITHOUT THE BACKBOARD BEING MOUNTED ONTO THE BEAM.** The springs are under big tension. The weight of the backboard compensates this tension. Therefore the backboard must be mounted first and only then may the transport brace be removed. **DANGER FOR SEVERE ACCIDENTS IF PROPER SEQUENCE NOT FOLLOWED !!**
- Store the transport brace and its fixings in a safe place (will be required if backboard needs replacement later on)
- Backboard is made of tempered glass : handle with care !



**STEP 5**

Firmly tighten all bolts and nuts  
Remove temporary support ① and store in safe place for possible use later on



**INSTALLING BACKBOARD BRACES**

**STEP 6**

Mount the M12 adjustor forks and fixing plates to the top corners of the backboard using 2 carriage bolts M10x30 with lockring and spring washer. Centre the mounting plate with the slotted holes of the backboard frame and tighten the nuts.

DO NOT TIGHTEN the adjustment forks yet, as these must still be adjustable at this point



**STEP 7**

Mount the backboard braces to the top of the main beam using the M10x30 bolts with washers and selflocking nuts supplied along.



**HORIZONTAL/VERTICAL ADJUSTMENT OF THE BACKBOARD**

**STEP 8**

Use a water level to check that the horizontal beam of the base frame as well as the framed glass backboard are perfectly horizontal. Perpendicular adjustment at a 90° angle is achieved by turning the backboard braces in or out; lock the M12 counter nuts when the backboard is in correct position.



### STEP 9

**Important :** mount backboard perpendicular to the main beam. After correct horizontal adjustment, firmly tighten all bolts and nuts of ring and backboard onto the beam mounting plate.



### STEP 10

Mount cover plate back on the pressure release mechanism compartment of ring.



## INSTALLING THE BACKBOARD PADDING

### STEP 11

Install the two halves of the screw-on padding by inserting the bolts with lockrings and spring washers supplied along into the 6 holes (4 in bottom part and 1 in each side part).



## REMOVING THE TRANSPORT BRACE

### STEP 12

The transport brace can now be removed safely. Store it in a safe place, for possible future need (in case of transporting the backstop unit to a different hall, or when replacing the backboard).



## INSTALLING THE SIDE PADS TO THE BASE FRAME

### STEP 13

Install the mounting brackets (4 lugs supplied with M8x25 bolts, lock rings and spring washers) in the positions indicated at the rear of the padding panels, and then slide the side pads in the frame slots provided.



## INSTALLING THE FRONT PADS (TOP PART AND BOTTOM PART)

### STEP 14

Lower front pad : install the male hinge part (1x left and 1 x right hand side model) in the positions indicated, using the M8x25 bolts with lockrings and spring washers supplied. Then slide the lower front pad into the female hinge parts that are fixed to the front of the bottom frame.



### STEP 15

Top front pad : install the mounting brackets (2 lugs supplied with M8x25 bolts, lock rings and spring washers) in the positions indicated. Lift the panel and slide the lugs into the slots provided (lower) and fix the top portion by sliding the velcro strap through the buckle.

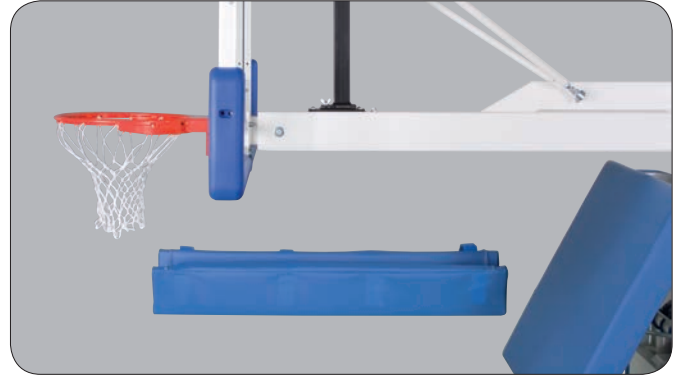




## INSTALLING THE NECK PAD

### STEP 16

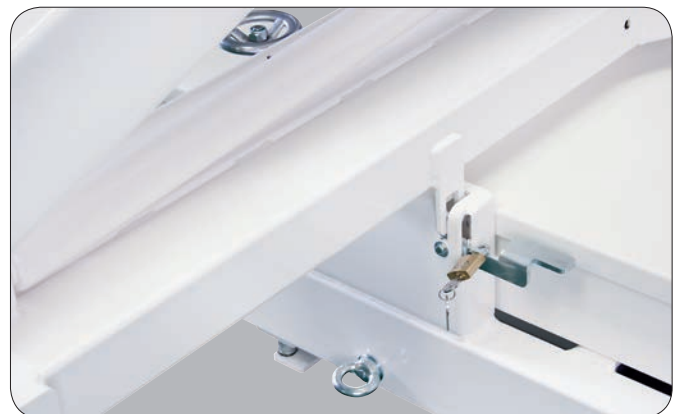
Mount the neck pad to the front part of the beam by means of the velcro straps, in such a way that sides and bottom part are covered and velcro straps are on top.



## INSTALLING PADLOCKS

### STEP 17

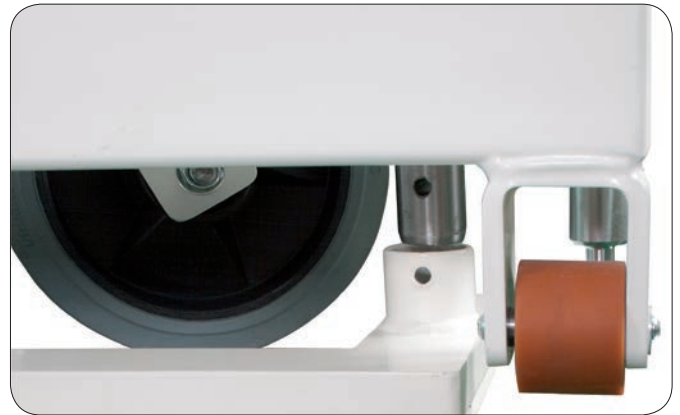
Installing a padlock at the rear base frame catch locks the unit in folded position.  
Installing a padlock on the locking pin of the telescopic rod locks the unit in game position.



**INSTALLING/ADJUSTING THE DYNAMIC SUB FRAME (DSF) - only on Super SAM**

**STEP 18**

Position the DSF frame under the front of the base frame, whereby the sockets line up perfectly with the vertical rods at either side of the front. Gently lift the backstop to its game position, whereby the rods slide into the DSF sockets. Use two M6x50 bolts with washers and selflocking nuts for firmly fixing the rods into the sockets.

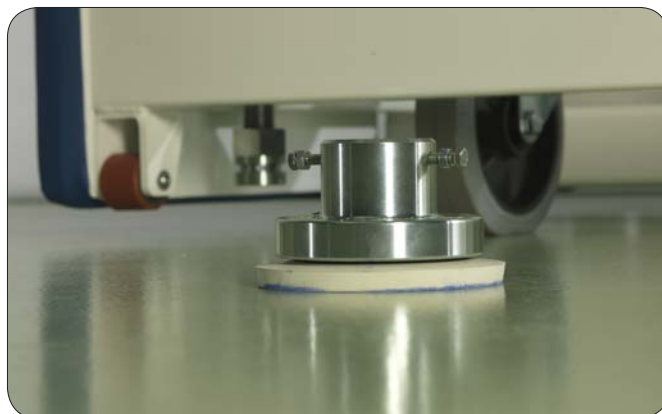




### INSTALLING/ADJUSTING THE AUTOMATIC PEDESTAL FEET (APF) - only on SAM Club

#### STEP 18

Position the two pedestal feet straight under the two vertical rods at either side of the front. Gently lift the backstop in its game position, whereby the rods with M30 nut (+slot) and coun-ternut slide into the pedestal feet. Fix the latter to the rods using for each 2 bolts M6x25 and nut in the slot of the counternut. Do not tighten the bolts, but make sure the pedestal feet can move on the vertical rods.



### INSTALLING THE FLOOR ANCHOR

#### STEP 19

Install the anchor according to the attached drawings 1 and 2

Fix the chain to the eyebolt at the rear of the backstop and fix the other end to the floor hook by means of the D-lock.

**DO NOT FULLY TIGHTEN THE CHAIN BUT LEAVE IT JUST A LITTLE BIT SLACK**



### CHECK PRIOR TO FIRST USE

#### STEP 20

Check if the up/down movement is fluent and smooth; if needed, the preset springtension can be adjusted. (see further : adjusting spring tension)

## OPERATING INSTRUCTIONS

### STEP 1

Check if floor is free of debris, obstacles etc prior to moving the backstop, in order to avoid damage to the wheels

### STEP 2

Move (push from the rear or pull from the ring) the folded backstop to the position desired.

**IMPORTANT : ALWAYS MOVE THE UNIT FIRST IN THE DIRECTION (POSITION) OF THE SWIVEL WHEELS, THEN STEER THE UNIT ONCE IT IS IN MOTION**

### STEP 3

Roll the unit in its correct position and drop the front locator pins in the corresponding floor plates in the sportsfloor surface; the DSF/APF systems ensure a correct playing height when unit is raised to game position.

### STEP 4

Connect the rear end of the base frame to the floor anchor using the chain and D-lock provided. **DO NOT FULLY TIGHTEN THE CHAIN BUT LEAVE IT JUST A LITTLE BIT SLACK**, this will avoid vibrations in the unit after heavy dunks.

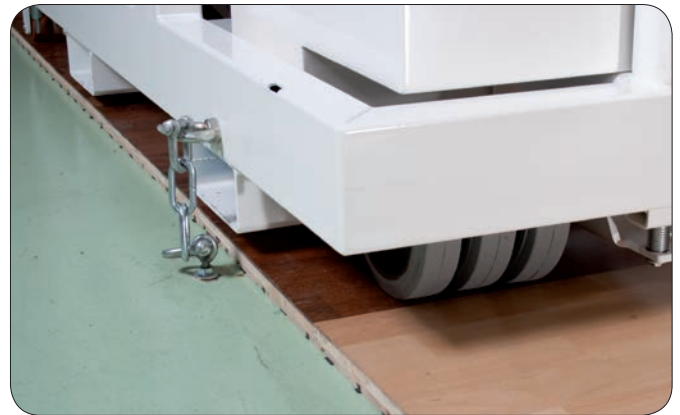


**STEP 4 A**

(if ordered)

Connect the two side eyebolts of the base frame to the floor anchors using the chains and D-locks provided. **DO NOT FULLY TIGHTEN THE CHAIN BUT LEAVE IT JUST A LITTLE BIT SLACK**, this will avoid vibrations in the unit after heavy dunks.

**(this option is available in case rear anchoring is not possible; an extra anchor chain set must then be ordered)**



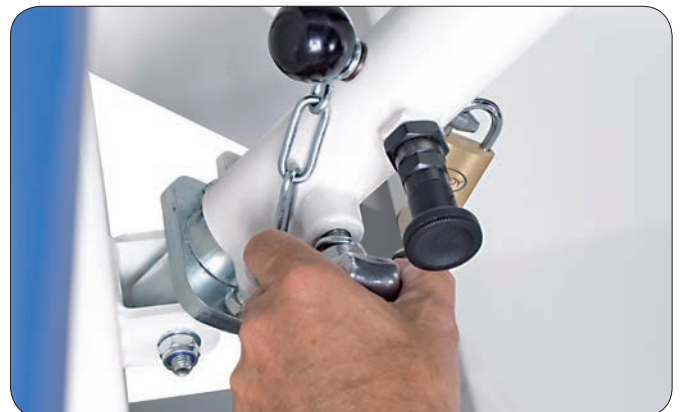
**STEP 5**

Remove the padlocks at the rear frame catch and at the telescopic rod locking pin.



**STEP 6**

On the telescopic rod, turn the star-knob anti-clockwise and remove the pin from the hole. Turn the automatic locking pin to its “ready” position so it will snap into place when reaching the “up” position.



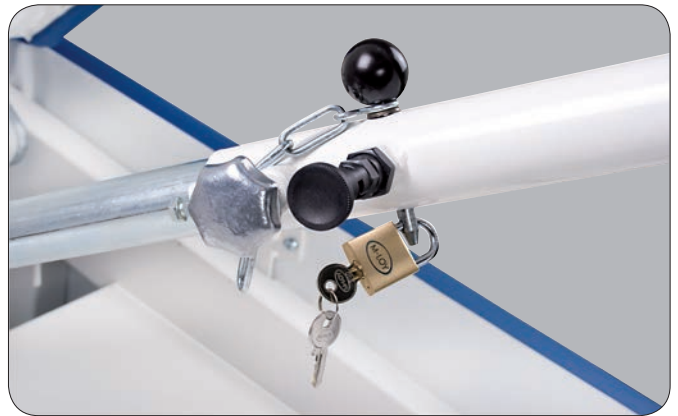
**STEP 7**

Unlock the rear frame catch (can be foot-operated) and lift the backstop to its “up” position, using the handle to the rear end of the main beam.



**STEP 8**

After the automatic lock pin has snapped into place, insert the pin and install the padlock. Turn the star-knob clockwise.



**STEP 9**

Lift the deadlock brace to horizontal position, hook it up to the catch at the front yoke, and tighten it in order to create a very firm connection between the two vertical columns.



**STEP 10**

(only for Super SAM backstops)  
Use the instant ring height adjuster handwheel at the rear of the base frame for fine tuning of ring height, if necessary.





## OPERATING INSTRUCTIONS FOR USE WITH MANUAL DSF / APF OPTION

### STEP 1

Check, when the SAM unit is in storage position, the position of the sliding bracket. Pulled out = automatic operation, pulled in = manual operation

### STEP 2

Make sure the sliding bracket is pulled in, to avoid the DSF or APF system from lowering automatically when you raise the main beam of the SAM unit into playing position.

### STEP 3

Bring the SAM unit into playing position by raising the main beam and roll the unit towards the correct location behind the end line.

### STEP 4

Once the SAM unit is in place, take the operating bars and place them in the cams of the DSF/APF (1 front left, 1 front right)



**STEP 5**

Push down, simultaneously with 2 persons, both the left and right operating bars down. By pushing down the bars, the front wheels of the SAM unit will lift off the floor and the front of the unit will support on the DSF or APF systems.



**STEP 6**

Place the operating bars underneath the storage bracket to keep the DSF or APF in playing position.



**STEP 7**

Lock the operating bars in the storage bracket by sliding in the locking pin.



**STEP 8**

Secure the locking pins by using the padlock, in order to avoid tampering with the operating bars by none-authorized persons.





## ADJUSTING THE SPRING TENSION

After a certain period of use, the tension of the springs may have decreased to the point of making it difficult to smoothly lower / raise the backstop. In this case the tension of the springs must be increased, in order to avoid damage to the unit. Especially if heavy shot clocks are mounted on top of the main beam, the springs will need to be adjusted in order to absorb the increased weight of the beam with shot clocks. Proceed as per below, if required.

### STEP 1

Raise unit to game position



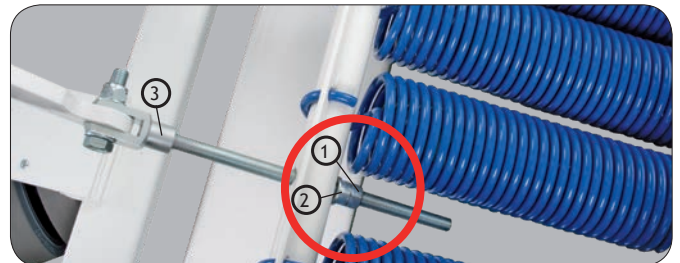
### STEP 2

Expose springs and ballast weight compartment in base frame by removing the cover plates



### STEP 3

The springs are attached to a tubular tension bar, which itself is fixed to the moving front frame via threaded rods. Loosen the lock nuts ① on these rods, turn nuts ② clockwise so that the rod moves minimum 1 cm in the direction of fixing point ③



### STEP 4

Tighten lock nuts ①, while making sure that nuts ② stay in place



### STEP 5

Raise and lower unit and repeat steps 1 through 4 until the up/down operation is a smooth process. Then install the cover plates again.



## ADJUSTING THE SPRING PACKAGE

### Adding a spring

Super SAM 245 as well as SAM Club units have a provision for inserting an extra spring (if a shot clock is mounted on the beam, this extra spring will be mandatory for a smooth folding cycle). With the extra spring comes a spring fixing plate which has a threaded rod at its rear end, plus a nut and a counternut. Slide the front hook of the spring over the tension bar, bring the spring in line with the other springs, hook up the spring fixing plate at the rear end and push the threaded rod through the frame cross member; then tighten nut 2 and secure by lock nut 1 (see picture)

## OPTIONAL FITTINGS

1612090 (only for Super SAM 245) : extra spring in compensation for the weight of a shot clock

1612091: shot clock support for single-faced shot clocks

1612092: shot clock support for four-faced shot clocks

1612095: floor anchor set for side-anchoring of SAM Club and Super SAM (instead of standard rear anchoring)

3183039: LED strip for mounting on glass backboard frame

Further possibilities include special colours for the safety padding (standard is blue; also available in green, red, black, yellow and orange) as well as the option of including extra ballast bars in the base frame for non-anchored use of the backstops (for instance on top of an ice rink underneath the basketball floor).

## MAINTENANCE

Periodically lubricate the moving parts of the pressure release rings. Failure to do so will cause the ring to become stiffer, and eventually incur damage; absence of lubricating invalidates the warranty !

Check if all bolts and nuts are tightly fixed.

Check the wheels; damaged wheels can be very harmful to your sportsfloor.

Check the general condition of the backstop : correct alignment, torn or damaged welds, any squeaking noises during operation or other visible or audible anomalies should be identified.

Check the condition of the net.

Check the safety pads for damages; damaged padding should always be replaced.

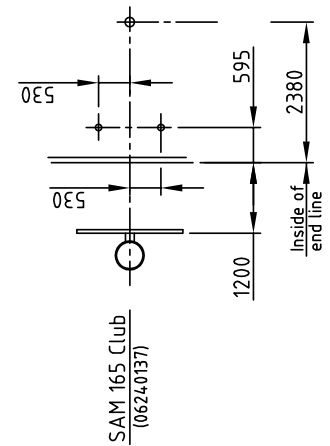
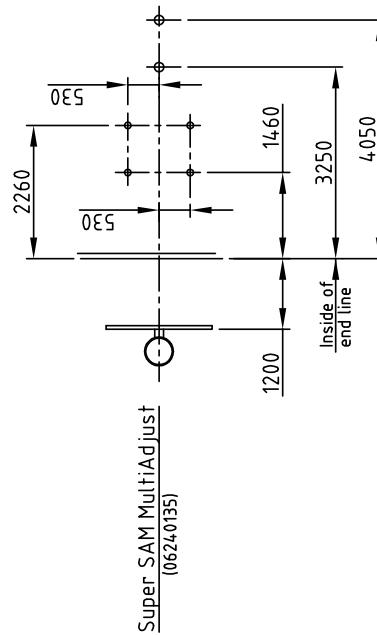
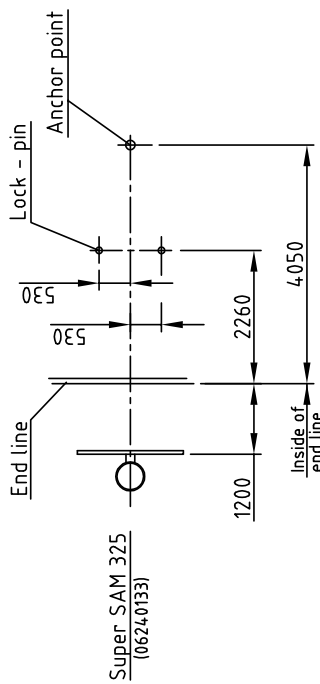
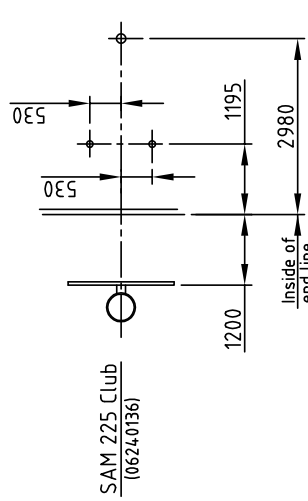
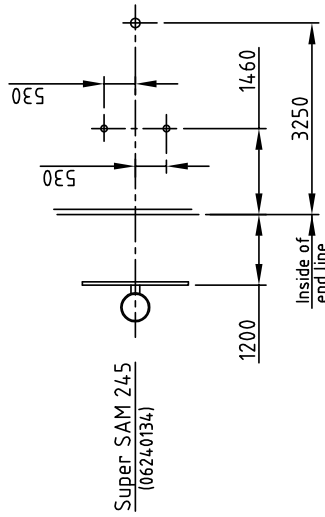
Check and periodically adjust the tension of the springs (see elsewhere) if needed.

Keep unit clean, keep it free of dust and dirt.

Store backboard installation assist tool as well as transport brace in a secure place; these may be needed in future (in case of backboard replacement; and in case of moving the assembled backstop unit to a different hall, respectively).

Use touch-up paint in case of surface damage to paintwork, in order to avoid corrosion build-up.

### Drawing 1



Drawn: ADB	Date: 2-9-'15	Name:	Position of floor anchoring SAM's (ring height 305 cm)		
Checked:	Date:		Scale: 1:80	Size: A3	Rev.: 00
Schelde Sports B.V.			Drawing nr.: 0624.014.7		

DIMENSIONS IN MM

The Assembly is made by Schelde Sports B.V.  
and may be the property of the company for whom  
it is made. It is not to be used for other purposes.

